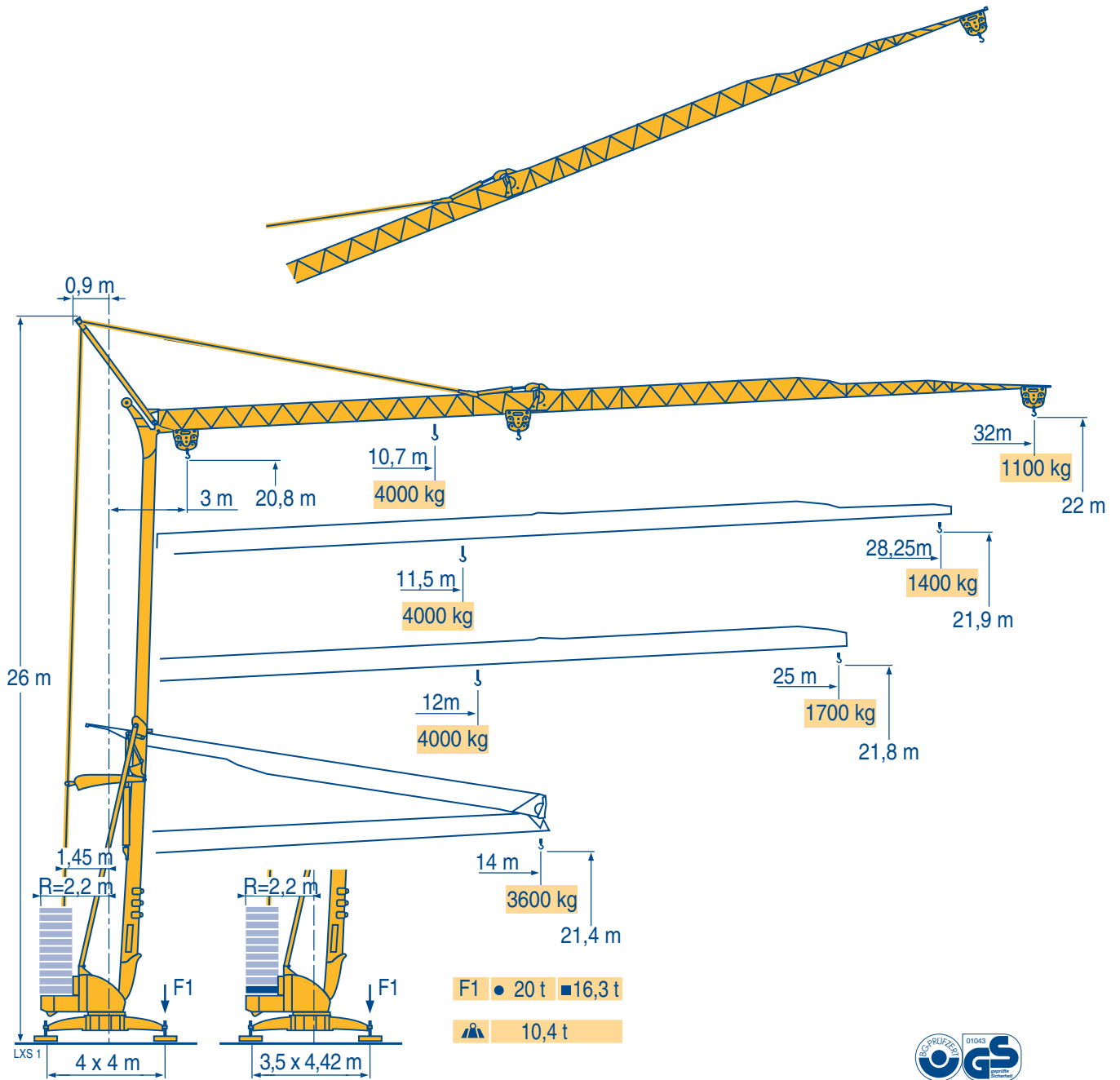


# POTAIN

## Igo 36



**CE** FEM 1.001-A3

**Manitowoc**  
Crane Group

Above. Beyond. Everywhere.™

Courbes de charges

Lastkurven

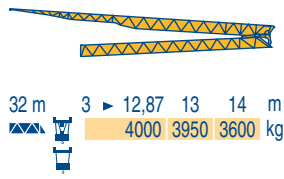
Load diagrams

Curvas de cargas

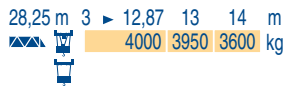
Curve di carico

Curva de cargas

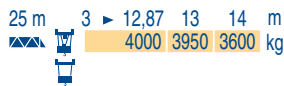
LXS 1



10,7	11	12	13	14	15	16	17	18	19	19,5	20	22	25	27	30	32 m	
4000	3870	3460	3125	2845	2610	2410	2230	2080	1940	-	1820	1615	1375	1250	1090	1000 kg	
											2000	1940	1730	1485	1350	1190	1100 kg



11,5	12	13	14	15	16	17	18	19	20	21	22	25	27	28,3 m	
4000	3790	3420	3120	2860	2640	2450	2280	2135	2000	1885	1780	1520	1375	1300 kg	
											2000	1890	1620	1480	1400 kg



12	13	14	15	16	17	18	19	20	21	21,8	23	25 m	
4000	3600	3280	3010	2775	2580	2400	2250	2110	1985	-	1775	1600 kg	
											2000	1875	1700 kg

Flèche relevée

Ausleger in Steilstellung

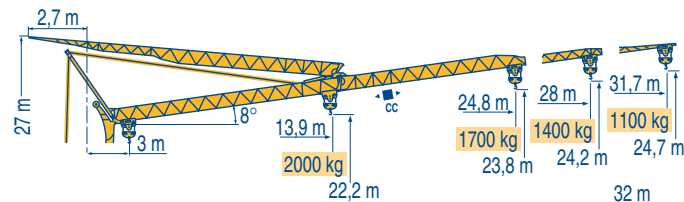
Luffing jib

Flecha izada

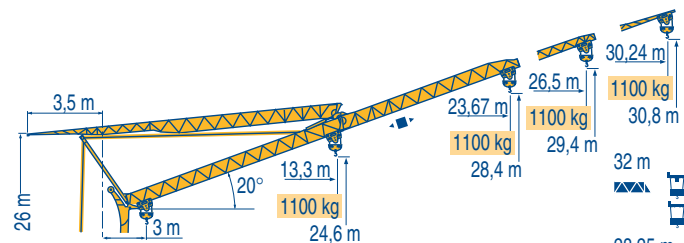
Braccio impugnato

Lança inclinada

LXS 1



32 m	3	18,3	19	19,5	21	23	25	26	28	30	31,7 m
		2000	1910	-	1685	1505	1355	1290	1175	1075	1000 kg
				2000	1830	1640	1485	1415	1295	1190	1100 kg
28,25 m	3	19,8	20,8	21	23	25	26	28 m			
		2000	-	1860	1660	1500	1425	1300 kg			
				2000	1975	1770	1605	1530	1400 kg		
25 m	3	20,7	21,6	23	24,8 m						
		2000	-	1755	1600 kg						
				2000	1860	1700 kg					



32 m	3	30,2 m
		1000 kg
		1100 kg
28,25 m	3	26,5 m
		1000 kg
		1100 kg
25 m	3	23,7 m
		1000 kg
		1100 kg

Igo 36



F

Chariot distributeur  
Chariot distributeur et courbes de charges  
Réactions en service  
Réactions hors service  
A vide sans lest (ni train de transport) avec flèche et hauteur maximum.

D

Verfahrbare Laufkatze  
Verfahrbare Laufkatze und Lastkurven  
Reaktionskräfte in Betrieb  
Reaktionskräfte außer Betrieb  
Ohne Last, Ballast (und Transportachse), mit Maximalausleger und Maximalhöhe.

GB

Traversing trolley  
Traversing trolley and load diagrams  
Reactions in service  
Reactions out of service  
Without load, ballast (or transport axes), with maximum jib and maximum height.

E

Carro distribuidor  
Carro distribuidor y curvas de cargas  
Reacciones en servicio  
Reacciones fuera de servicio  
Sin carga, sin lastre, (ni tren de transporte), flecha y altura máxima.

I








Carrellino distributore  
Carrellino distributore e curve di carico  
Reazioni in servizio  
Reazioni fuori servizio  
A vuoto, senza zavorra (ne assali di trasporto) con braccio massimo e altezza massima.

P

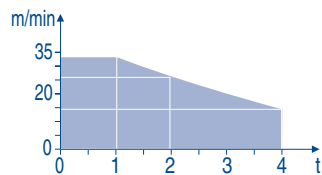
Carro distribuidor  
Carro distribuidor e curva de cargas  
Reações em serviço  
Reações fora de serviço  
Sem carga (nem trem de transporte)- sem lastro com lança e altura máximas.

Mécanismes  
Antriebe  
Mechanisms  
Mecanismos  
Meccanismi  
Mecanismos

LXS 1

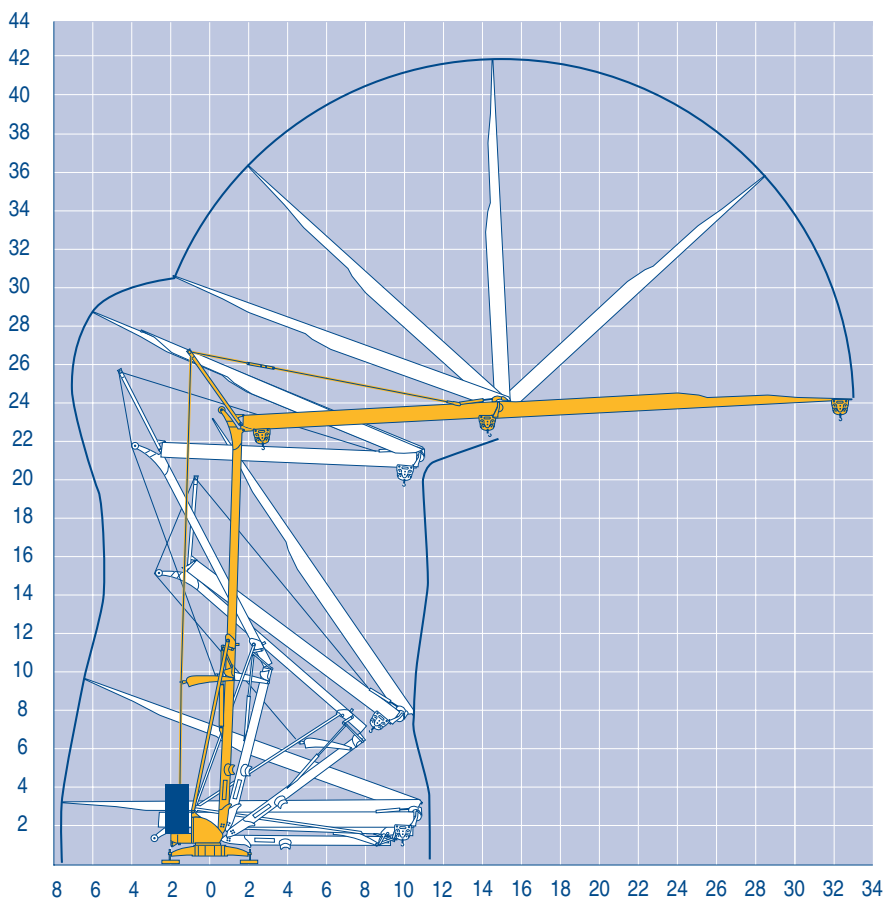
												ch - PS hp	kW	
	15 LVF 10 Optima	m/min	3,6	18	30	49	66						15	11
		kg	2000	2000	2000	1100	500							
		m/min	3,6	18	30	54	66	1,8	8,9	15	27	33		
		kg	2000	2000	2000	1000	500	4000	4000	4000	2000	1000		
	3 DVF5	m/min	19 - 41										3	2,2
	RVF2-50	tr/min U/min rpm	0 → 0,8										4	3
CEI 38  IEC 38		kVA												
400 V (+6% -10%) 50 Hz		15 LVF 10 : 22 kVA					2000/14							

15 LVF 10 Optima



Montage  
Montage  
Erection  
Montaje  
Montaggio  
Montagem

LXS 1



Igo 36

POTAIN 

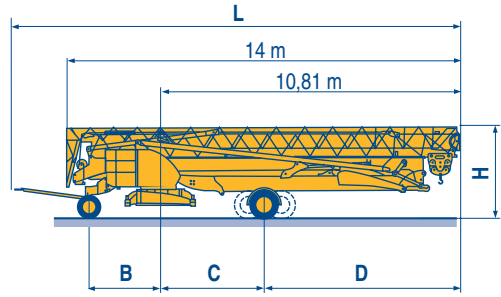


F	D	GB	E	I	P
Levage	Heben	Hoisting	Elevación	Sollevamento	Elevação
Distribution	Katzfahren	Trolleying	Distribución	Distribuzione	Distribuição
Orientation	Schwenken	Slewing	Orientación	Rotazione	Rotação
Conforme aux directives CEE sur le niveau acoustique	Gemäss EWG-Richtlinien für den Schall-Leistungspegel	In compliance with the EEC Instructions on noise level	Conforme con las directivas CEE sobre el nivel acustico	Conforme alle direttive CEE sul livello acustico	Conforme as directivas CEE sobre o nível acústico

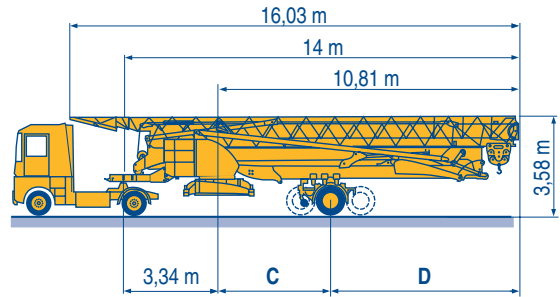
Transport  
Transport  
Transport  
Transporte  
Trasporto  
Transporte

LXS 2

		L (m)	B (m)	C (m)	D (m)	H (m)
DS61/S120	○					
DS61/S125	DS61/S120	15,9	2,45	3,73	7,08	3,05/3,2
DJ80/S120	○					
DJ80/S125	DJ80/S120	15,9	2,45	4,15	6,66	3,1
DJ100/S120	DJ100/S120	16,33	2,45	4,15	6,66	3,23
DJ105/S125	DJ105/S125	16,35	2,45	4,15	6,66	3,2
DJ126M/S125	DJ126M/S215M	17,14	3,24	4,07	6,74	3,55
DJ126M/S215M						



		C (m)	D (m)
SL122/J215M			
SL121/J135	SL122/J215M	4,07	6,74
SL121/S215M	SL121/J135	4	6,66
	SL121/S215M	4,07	6,74



○	F	D	GB	E	I	P
	Chantier	Baustelle	Site	Obra	Cantiere	Estaleiro



Document commercial non contractuel. Pour toute information technique se référer à la notice correspondante

Unverbindliches Vertriebsdokument. Für technische Informationen, siehe die entsprechenden Anweisungen.

This commercial document is not legally binding. For any technical information, please refer to the corresponding instructions.

Documento commercial non contractuel. Para cualquier información técnica, ver la noticia correspondiente.

Documento commerciale non vincolante. Per tutte le informazioni tecniche fare riferimento al catalogo istruzioni

Documento comercial não contratual. Para qualquer informação técnica complementar consultar as respectivas instruções



18, rue de Charbonnières - B.P.173  
69132 ECULLY Cedex - France

Tél. : (33) 4 72 18 20 20  
Fax. : (33) 4 72 18 20 00  
www.manitowoccrane.com www.potain.com



**Americas**

Tel : +1 920 683 6322  
Tel : +1 717 597 8121

**Europe - Middle East - Africa**

Tel : +(33) 4 72 81 50 00  
Tel : +(44) 191 565 6281

**Asia - Pacific**

Tel : +(65) 6861 7133  
Fax : +(65) 6862 4142

www.manitowoccrane.com

**Igo 36**

Réf. 2003 48 LXS 2

Copyright.Reproduction interdite © POTAIN 2003

Réalisation HeadLines